



GSTP1 Monoclonal Antibody

Catalog No	YP-Ab-02329
Isotype	IgG
Reactivity	Human
Applications	WB;IHC;IF;FCM;ELISA
Gene Name	GSTP1
Protein Name	Glutathione S-transferase P
Immunogen	Purified recombinant fragment of human GSTP1 expressed in E. Coli.
Specificity	GSTP1 Monoclonal Antibody detects endogenous levels of GSTP1 protein.
Formulation	Ascitic fluid containing 0.03% sodium azide,0.5% BSA, 50%glycerol.
Source	Monoclonal, Mouse
Purification	Affinity purification
Dilution	Western Blot: 1/500 - 1/2000. Immunohistochemistry: 1/200 - 1/1000. Immunofluorescence: 1/200 - 1/1000. Flow cytometry: 1/200 - 1/400. ELISA: 1/10000. Not yet tested in other applications.
Concentration	1 mg/ml
Purity	≥90%
Storage Stability	-20°C/1 year
Synonyms	GSTP1; FAEES3; GST3; Glutathione S-transferase P; GST class-pi; GSTP1-1
Observed Band	
Cell Pathway	Cytoplasm . Mitochondrion . Nucleus . The 83 N-terminal amino acids function as an uncleaved transit peptide, and arginine residues within it are crucial for mitochondrial localization.
Tissue Specificity	Brain,Cajal-Retzius cell,Colon carcinoma,Fetal brain cortex,Platelet,Urinar
Function	catalytic activity:RX + glutathione = HX + R-S-glutathione.,function:Conjugation of reduced glutathione to a wide number of exogenous and endogenous hydrophobic electrophiles.,online information:The Singapore human mutation and polymorphism database,similarity:Belongs to the GST superfamily. Pi family.,similarity:Contains 1 GST C-terminal domain.,similarity:Contains 1 GST N-terminal domain.,subunit:Homodimer.,
Background	Glutathione S-transferases (GSTs) are a family of enzymes that play an important role in detoxification by catalyzing the conjugation of many hydrophobic and electrophilic compounds with reduced glutathione. Based on their biochemical, immunologic, and structural properties, the soluble GSTs are categorized into 4 main classes: alpha, mu, pi, and theta. This GST family member is a polymorphic gene encoding active, functionally different GSTP1 variant proteins that are thought to function in xenobiotic metabolism and play a role in susceptibility to cancer, and other diseases. [provided by RefSeq, Jul



2008],

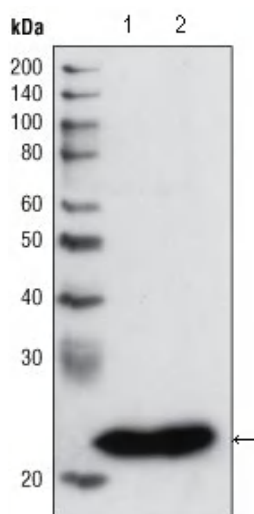
matters needing attention

Avoid repeated freezing and thawing!

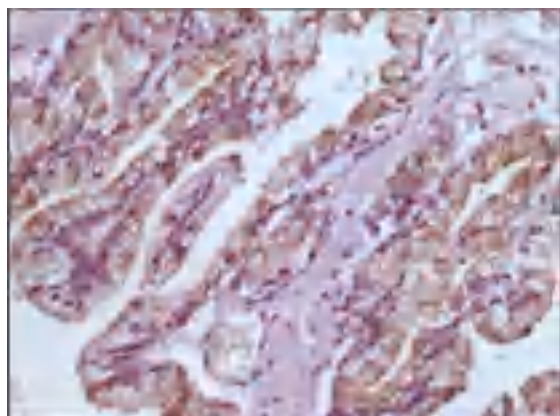
Usage suggestions

This product can be used in immunological reaction related experiments. For more information, please consult technical personnel.

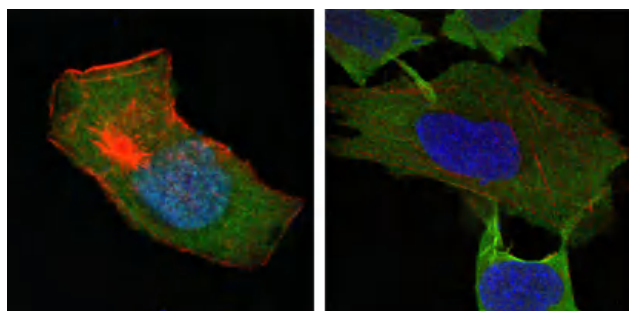
Products Images



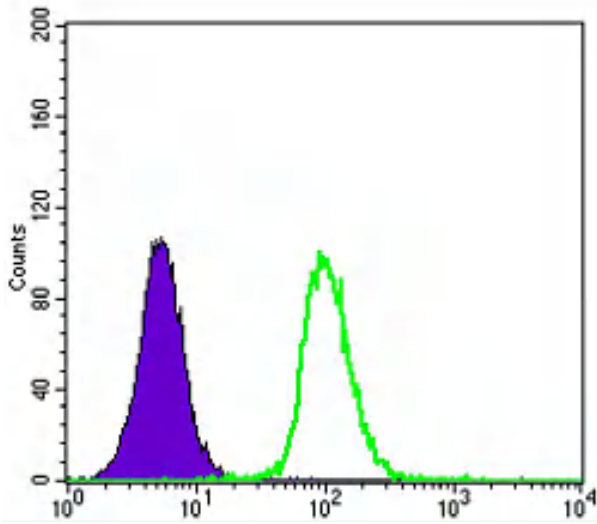
Western Blot analysis using GSTP1 Monoclonal Antibody against PC3 cell lysate (1) and human cerebellum tissue lysate (2).



Immunohistochemistry analysis of paraffin-embedded human prostate tissues with DAB staining using GSTP1 Monoclonal Antibody.



Confocal immunofluorescence analysis of HepG2 (left) and L-02 (right) cells using GSTP1 Monoclonal Antibody (green). Red: Actin filaments have been labeled with DY-554 phalloidin. Blue: DRAQ5 fluorescent DNA dye.



Flow cytometric analysis of K562 cells using GSTP1 Monoclonal Antibody (green) and negative control (purple).